

# RFC Editor Report

IETF 92  
Dallas, Texas

# RFC Editor at IETF 92

## Office Hours

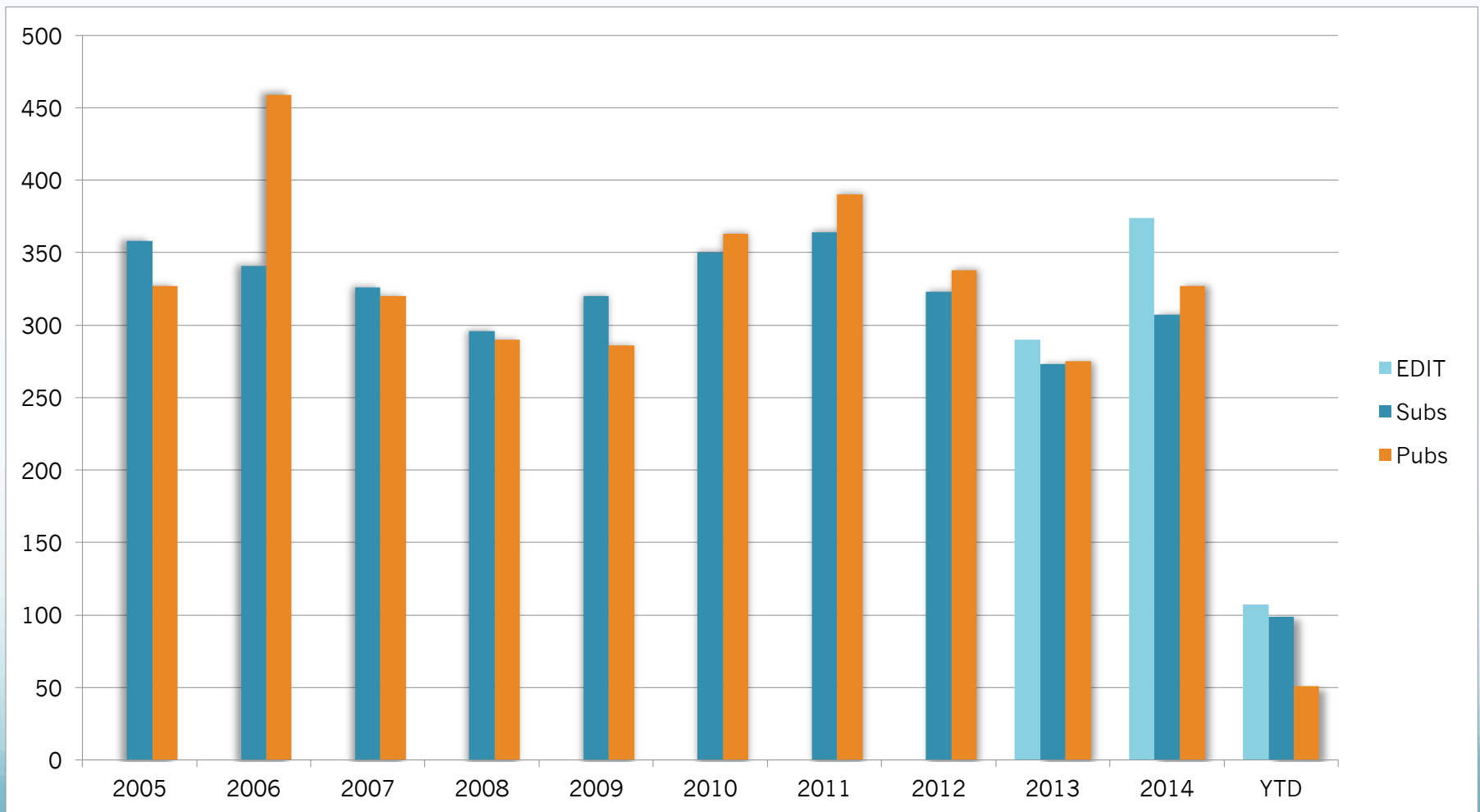
RPC: Mon – Thu (9:00 – 5:00)

RSE: Mon (1:00 – 3:30) & Wed (9:00 – 11)

ISE: Mon & Wed (9:00 – 11:30)

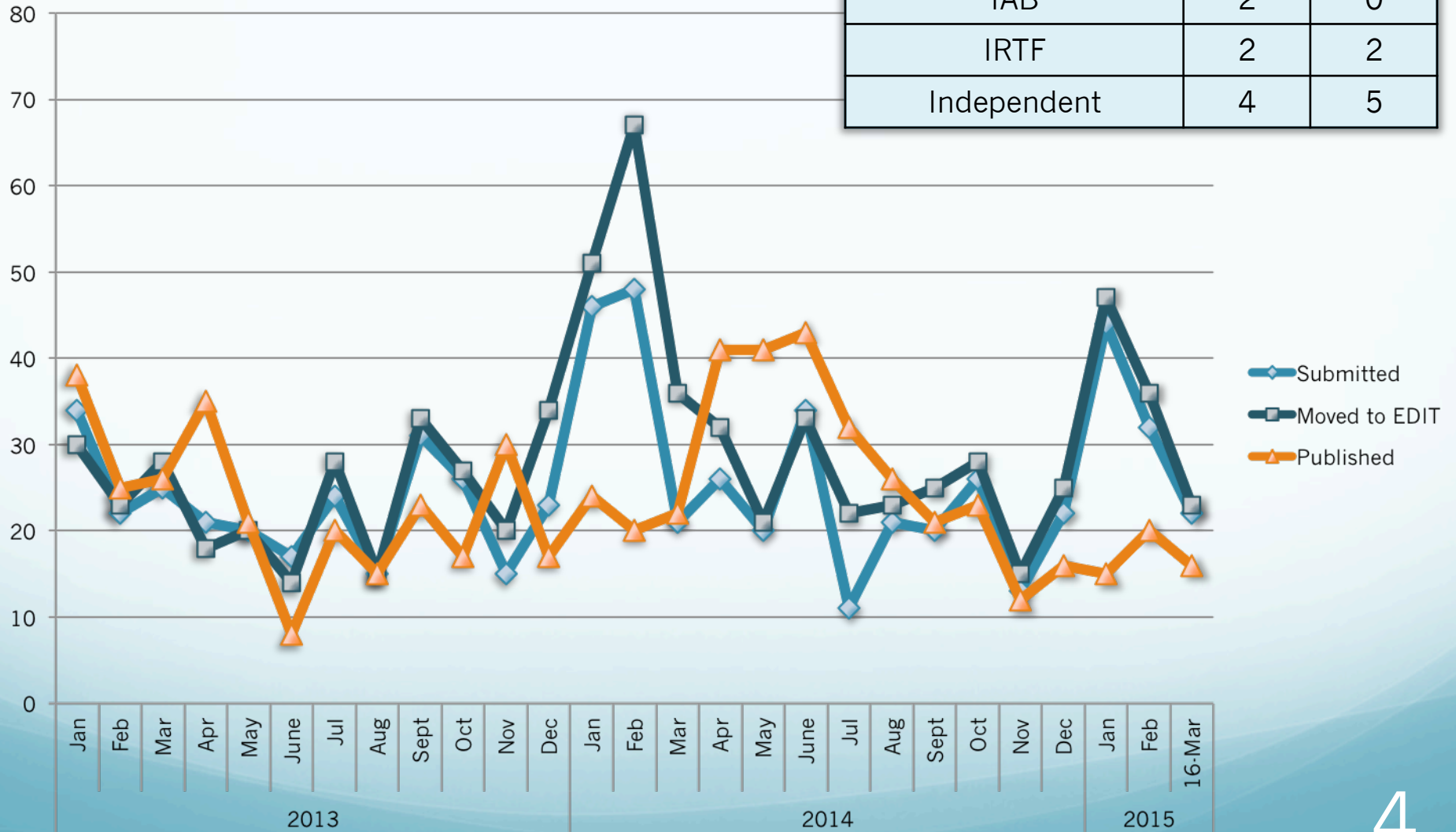
<http://www.rfc-editor.org/ietf.html>

# Annual Subs & Pubs



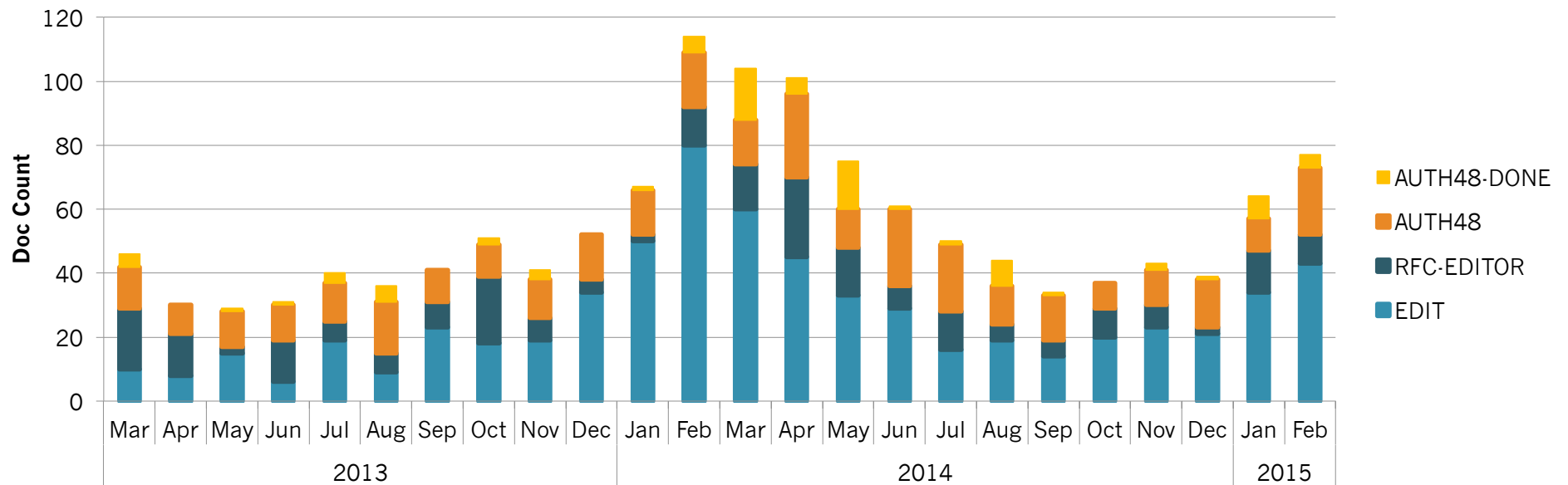
# Monthly Queue

| Nov – Mar 16, 2015 | Subs | Pubs |
|--------------------|------|------|
| IETF WG            | 113  | 65   |
| IETF non-wg        | 12   | 7    |
| IAB                | 2    | 0    |
| IRTF               | 2    | 2    |
| Independent        | 4    | 5    |



# Queue Movement

## # of Docs in Primary Processing States

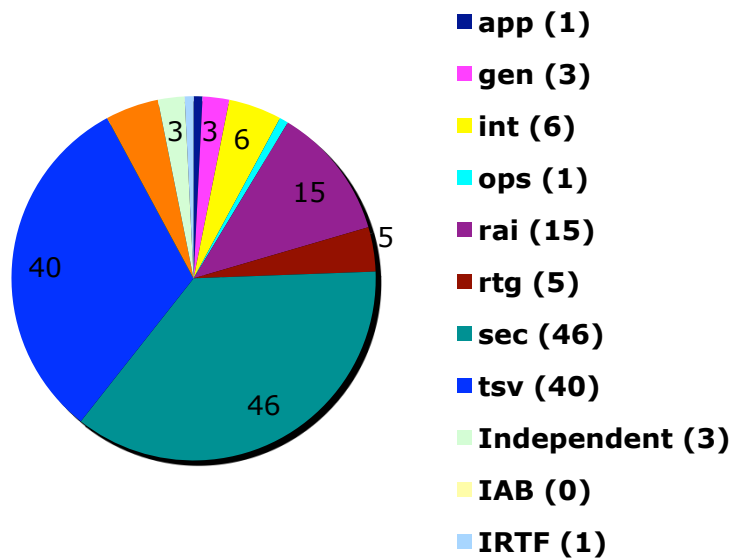


# RPC Processing Times

|                                       | 2014 |     |     |     |     |     |     |     |     |     | 2015 |     | 12mo Avg   |
|---------------------------------------|------|-----|-----|-----|-----|-----|-----|-----|-----|-----|------|-----|------------|
|                                       | Mar  | Apr | May | Jun | Jul | Aug | Sep | Oct | Nov | Dec | Jan  | Feb |            |
| Met SLA Target<br>(67% RET or better) | ✗    | ✗   | ✗   | ✗   | ✗   | ✓   | ✗   | ✓   | ✓   | ✓   | ✓    | ✗   | <b>42%</b> |
| % of docs<br>pub <= 6 wks             | 36%  | 17% | 5%  | 2%  | 46% | 77% | 52% | 74% | 92% | 69% | 73%  | 60% | <b>50%</b> |
| # of docs<br>pub <=6 wks              | 8    | 7   | 2   | 1   | 13  | 20  | 13  | 17  | 11  | 11  | 11   | 12  | <b>11</b>  |
| total # of docs pub                   | 22   | 41  | 43  | 43  | 32  | 26  | 25  | 23  | 12  | 16  | 15   | 20  | <b>27</b>  |
| total # of docs sub                   | 21   | 26  | 20  | 34  | 11  | 21  | 20  | 26  | 13  | 22  | 44   | 32  | <b>24</b>  |
| total # of docs<br>entering EDIT      | 32   | 21  | 33  | 33  | 22  | 23  | 21  | 28  | 15  | 25  | 47   | 36  | <b>28</b>  |
| 67th percentile (wks)                 | 7.1  | 9.7 | 10  | 11  | 8.2 | 5.9 | 7.4 | 5.8 | 5.2 | 6   | 5.9  | 6.3 | <b>7.4</b> |

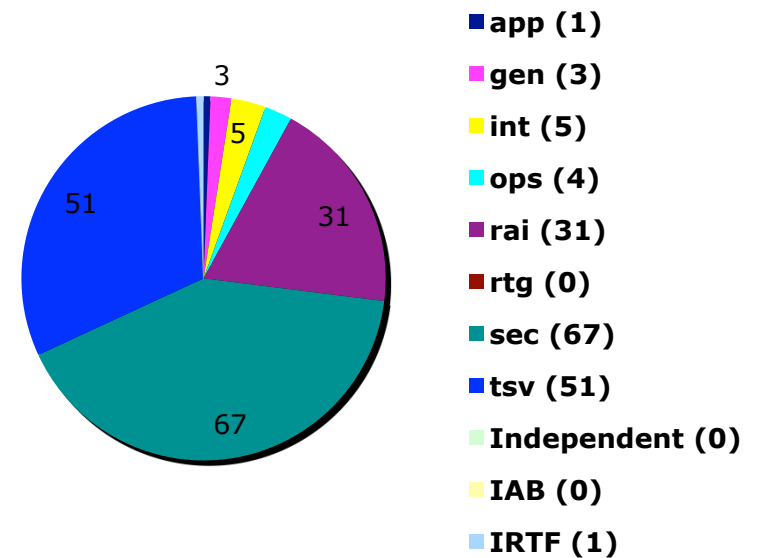
# Reported Errata by Source of RFC

## IETF 91



as of 2014-11-05

## IETF 92



as of 2015-03-18

# What's New

Reference libraries created as a result of the RFC Style Guide (RFC 7322)

- Reference entries for RFCs available in
  - TXT <<http://www.rfc-editor.org/in-notes/rfc-ref.txt>>
  - XML <<http://www.rfc-editor.org/refs/bibxml/>>
- Reference entries for STDs and BCPs in TXT
  - STD <<http://www.rfc-editor.org/in-notes/std-ref.txt>>
  - BCP <<http://www.rfc-editor.org/in-notes/bcp-ref.txt>>



# RSE Update

## Digital Object Identifiers (DOIs)

- DOIs to be assigned to all past and present RFCs by end of April 2015

## Google Scholar

- RFC Editor has completed everything the Google Scholar engineers have requested; now waiting for the actual indexing

## Writing Lab report

- Very positive feedback from the participants
- A significant work load on the RPC
- Considering the creation of a mailing list for English language usage questions, with volunteers from the community participating to help other authors

# Format Update

- Most of the drafts are now “stable” (to be updated as we learn more through implementation)
  - See the Format FAQ for the current list of drafts associated with this project
  - <http://www.rfc-editor.org/rse/FormatFAQ.html>
- The community comment period for the SoWs closed; now waiting for the last drafts to finish before sending these out attached to an RFP