

RFC Editor Report

IETF 93
Prague, Czech Republic

RFC Editor at IETF 93

Office Hours

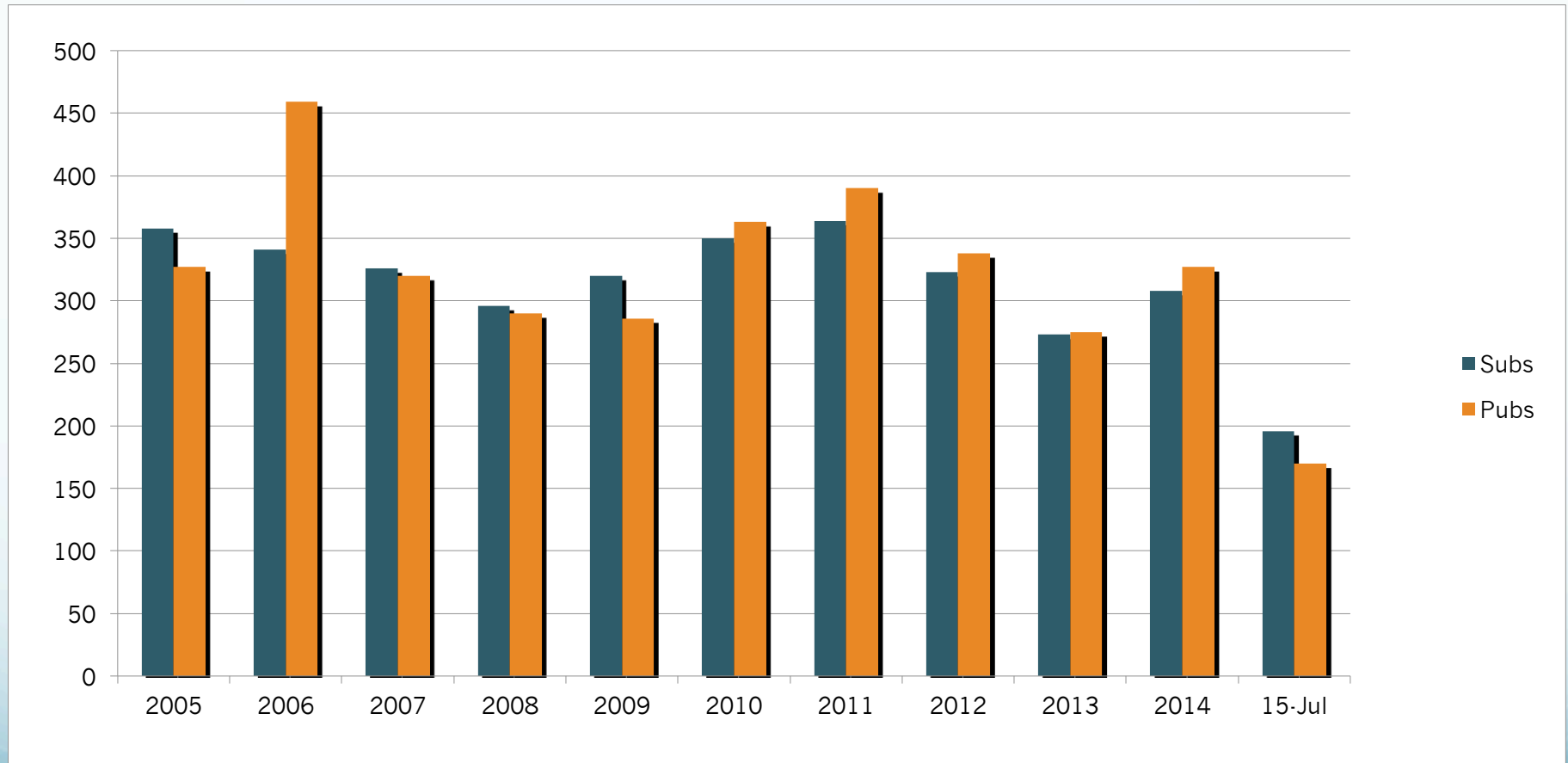
RPC: Mon – Thu

RSE: Mon & Tue

ISE: Mon & Tue

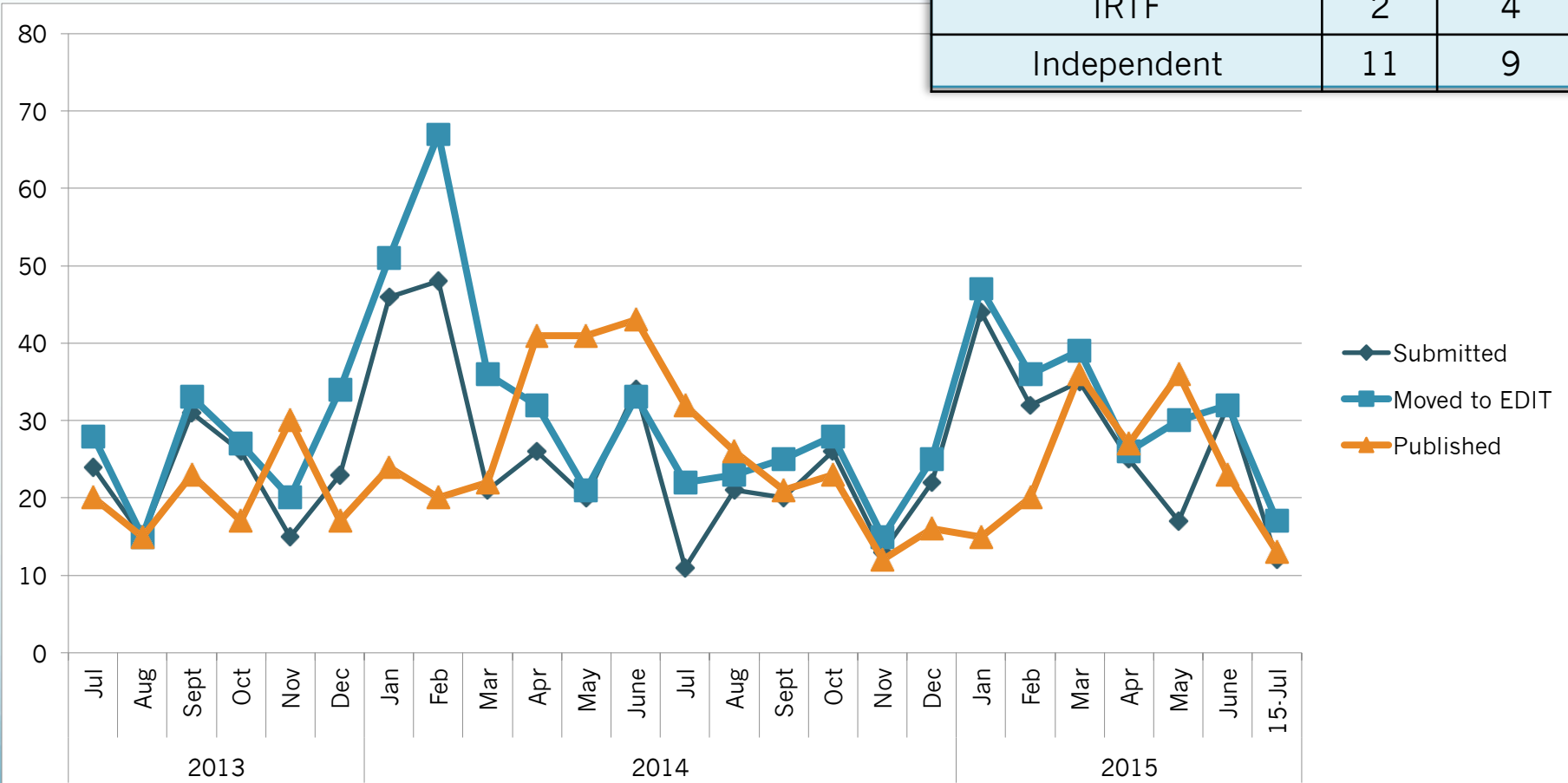
<http://www.rfc-editor.org/ietf.html>

Annual Subs & Pubs



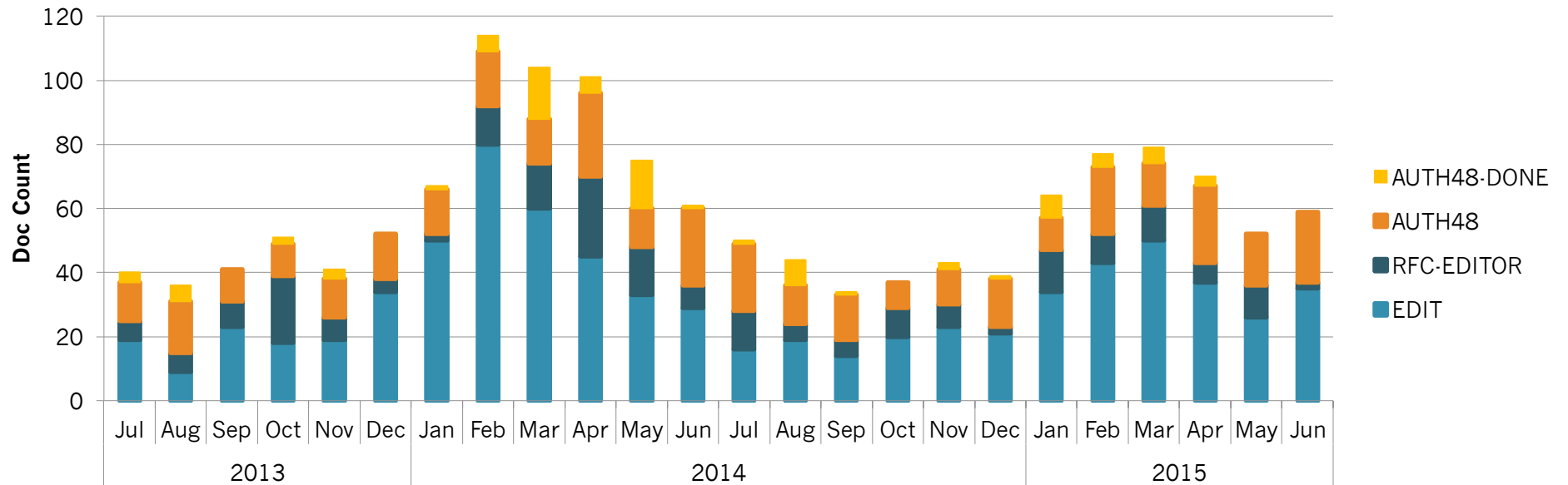
Monthly Queue

Mar – Jul 15, 2015	Subs 120	Pubs 135
IETF WG	98	108
IETF non-wg	8	12
IAB	1	2
IRTF	2	4
Independent	11	9



Queue Movement

of Docs in Primary Processing States



RPC Processing Times

	2014						2015						12mo Avg
	Jul	Aug	Sep	Oct	Nov	Dec	Jan	Feb	Mar	Apr	May	Jun	
Met SLA Target (67% RET or better)	✗	✓	✗	✓	✓	✓	✓	✗	✗	✓	✗	✗	50%
% of docs pub <= 6 wks	46%	77%	52%	74%	92%	69%	73%	60%	50%	81%	19%	43%	61%
# of docs pub <=6 wks	13	20	13	17	11	11	11	12	18	22	7	10	14
total # of docs pub	32	26	25	23	12	16	15	20	36	27	36	23	24
total # of docs sub	11	21	20	26	13	22	44	32	35	25	17	32	25
total # of docs entering EDIT	22	23	21	28	15	25	47	36	39	26	30	32	29
67th percentile (wks)	8.2	5.9	7.4	5.8	5.2	6	5.9	6.3	7.4	6	9.2	7.5	6.7

SLA: 67% of published docs have an RFC Editor time of 30 work days or less
 RFC Editor time: RPC-controlled states (i.e., does not include 3rd party states)

What's New

- Transitioned from @tools.ietf.org to @ietf.org (notification messages)
- Made updates for handling the ART area
- DOIs
 - Assigned to already existing RFCs
 - Assigned to new RFCs upon publication
 - Reference libraries updated as a result of DOI addition
 - Working with Tony Hansen to xml2rfc.ietf.org library updated

RSE Update

Digital Object Identifiers (DOIs)

- Project is complete; DOIs have been assigned to all published RFCs and is now part of the automated workflow for new RFCs

Google Scholar

- Project is complete; RFCs are now being properly indexed by Google Scholar

Digital Preservation

- Working to find partners to archive RFCs according to information science best practice
- See <draft-iab-rfc-preservation> for a description of the work area

RFC Editor website

- Website is being moved to a WordPress platform; work expected to complete in September 2015

Format update

- Discussing the process by which to move the drafts associated with this project forward
- SoWs and drafts are undergoing further review within the Tools Development team
- Pointers to the most recent versions of drafts associated with this work available through the FAQ: <http://www.rfc-editor.org/rse/FormatFAQ.html>