

# RFC Editor Report

IETF 94  
Yokohama, Japan

# RFC Editor at IETF 94

## Office Hours

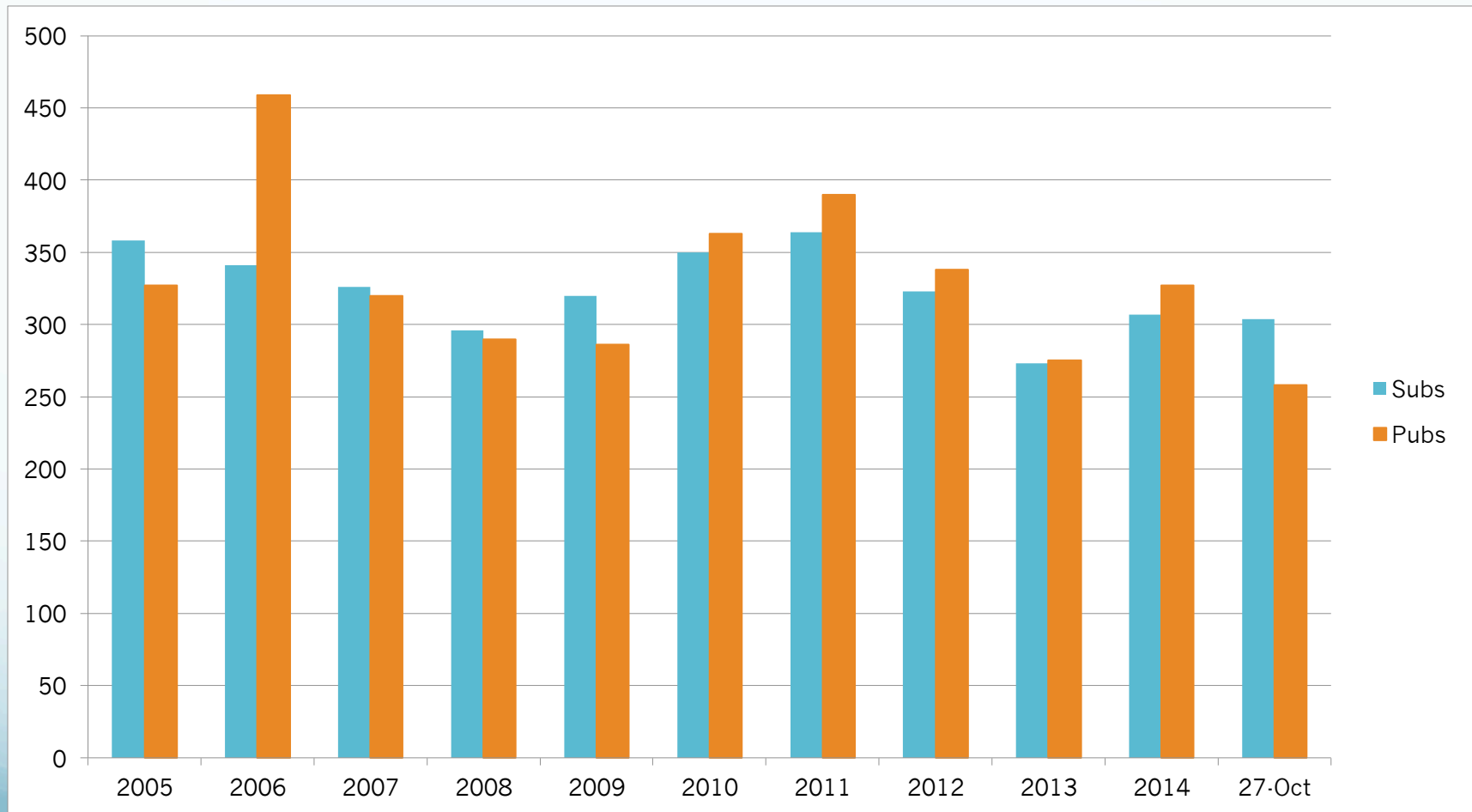
RPC: Mon – Thu

RSE: Mon & Tue

ISE: Mon & Thu

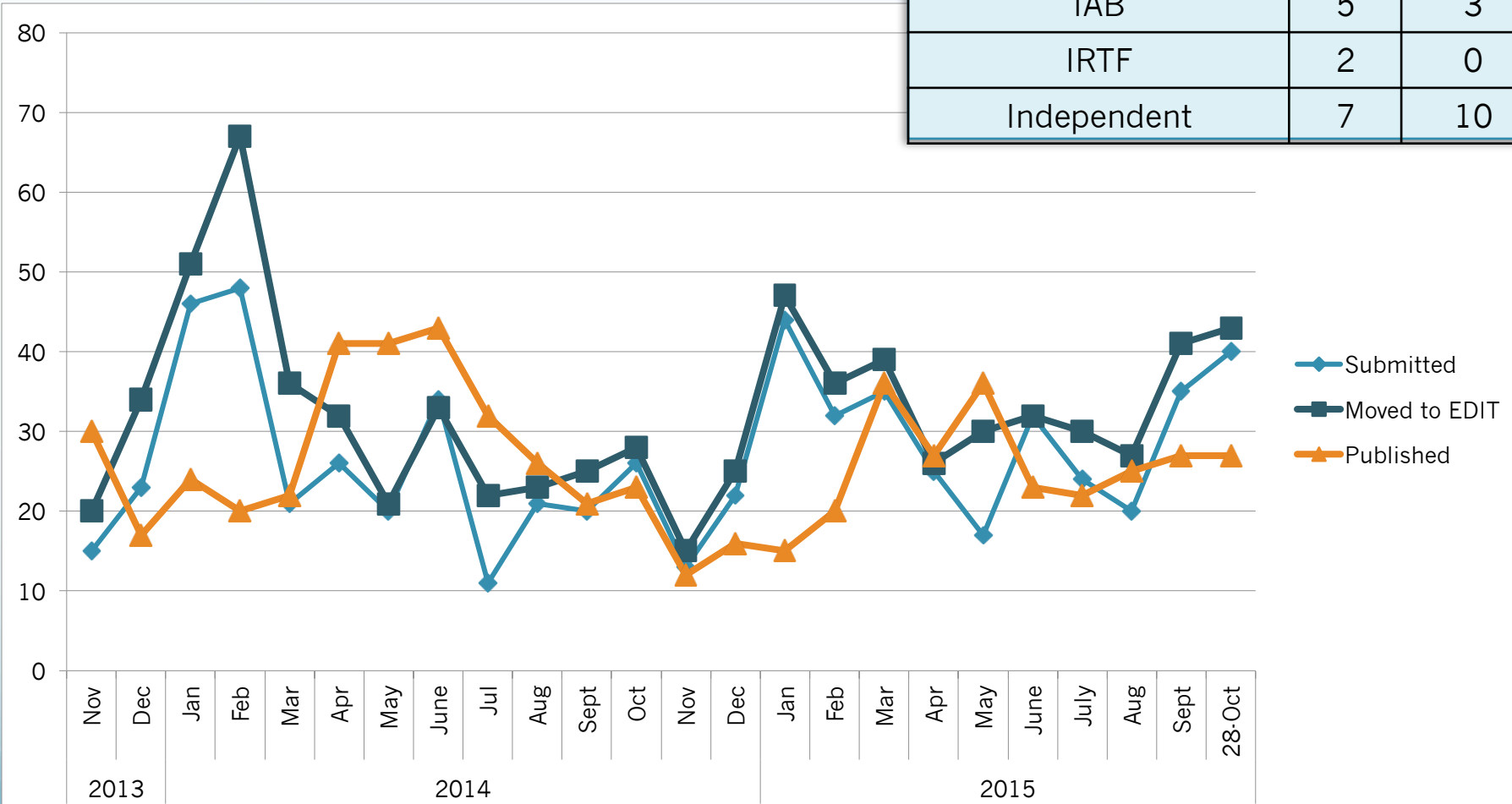
<http://www.rfc-editor.org/ietf.html>

# Annual Subs & Pubs



# Monthly Queue

July – 28 October 2015	Subs 119	Pubs 101
IETF WG	93	82
IETF non-wg	12	6
IAB	5	3
IRTF	2	0
Independent	7	10



# RPC Processing Times

	2014			2015									12mo Avg
	Nov	Dec	Jan	Feb	Mar	Apr	May	Jun	Jul	Aug	Sept	28 Oct	
Met SLA Target (67% RET or better)	✓	✓	✓	✗	✗	✓	✗	✗	✗	✗	✗	✗	<b>33%</b>
% of docs pub ≤ 6 wks	92%	69%	73%	60%	50%	81%	19%	43%	14%	24%	22%	19%	<b>47%</b>
# of docs pub ≤ 6 wks	11	11	11	12	18	22	7	10	3	6	6	5	<b>10</b>
total # of docs pub	12	16	15	20	36	27	36	23	22	25	27	27	<b>24</b>
total # of docs sub	13	22	44	32	35	25	17	32	24	20	35	40	<b>28</b>
total # of docs entering EDIT	15	25	47	36	39	26	30	32	30	27	41	43	<b>33</b>
67th percentile (wks)	5.2	6	5.9	6.3	7.4	6	9.2	7.5	8.5	8.2	9	8.6	<b>7.3</b>

SLA: 67% of published docs have an RFC Editor time of 30 work days or less  
 RFC Editor time: RPC-controlled states (i.e., does not include 3<sup>rd</sup> party states)

# What's New

- Revamped website

- Updated look & feel
- Easier navigation; easier maintenance
- Quick search in top right
- Collected feedback

<https://www.rfc-editor.org/rse/wiki/doku.php?id=webfeedback>

- Responded to 9 legal requests YTD

- Recent influx – 5 completed in Sept
- Responded to 10 in 2014

# RSE Update

See the RSE's plenary slides

<https://www.ietf.org/proceedings/94/slides/slides-94-ietf-plenary-0.pdf>