



RFC EDITOR REPORT

IETF 81

Quebec City, Canada

July 2011

1

WHO IS THE RFC EDITOR

Olaf Kolkman: Acting RSE (rse@rfc-editor.org)

Nevil Brownlee: ISE (rfc-ise@rfc-editor.org)

RFC Production Center:

- Sandy Ginoza (sginoza@amsl.com)
- Alice Hagens (ahagens@amsl.com)
- Megan Ferguson (mferguson@amsl.com)
- Lynne Bartholomew (lbartholomew@amsl.com)
- Rebecca VanRheenen (rvanrheenen@amsl.com)
- RFC Editor (rfc-editor@rfc-editor.org)

2 additional PT editors starting in August

- Linda Butler
- Judy Furukawa

(note, you may receive email from any of these addresses)

RFC EDITOR AT IETF 81

RFC Production Center Office Hours

Monday - Wednesday

9:00 - 4:30

ISE Office Hours

Nevil Brownlee

Monday 1:00 - 3:00

Tuesday 9:00 - 11:30

Tools for Creating Internet-Drafts Tutorial

Presented by: Alice Hagens and Stefan Santesson

Sunday, July 24, 2011 / 3:00 - 4:50

Room: 206 B

RFC EDITOR IN TRANSITION

Reorganization in Progress

RFC Series Editor Search Announcement

<http://www.rfc-editor.org/rse/RSE-search-announce.html>

The RFC Series Editor

<http://www.rfc-editor.org/rse/RSE-position.html>

RFC Editor Model (Version 2)

<http://tools.ietf.org/html/draft-iab-rfc-editor-model-v2-02>

Comment on the rfc-interest list

rfc-interest@rfc-editor.org

WHAT'S NEW

- Digital signatures for RFCs
 - Discussed on rfc-interest list (subject: [rfc-i] Signing RFCs)
 - 19 July 2011 – Based on rfc-interest discussion, RFC Editor decided will be signing RFCs in same manner as I-Ds (RFC 5485).
- Conclusion of FYI RFC sub-series
 - draft-iesg-rfc1150bis-01.txt approved for pub
 - Obsoletes RFC 1150
 - Moves RFC 1150 to Historic status

CURRENT RFC EDITOR QUEUE

(AS OF 18 July)

Current Q	IETF	Non-WG IETF	IAB	IRTF	Independent	Total	Med Wks in Q
EDIT	13	6				19	2.6
RFC- EDITOR	9	4				13	1.4
AUTH48	22	4				26	1.6
AUTH	1					1	0.9
IANA	3					3	1.6
MISSREF	45	3				48	21.4
TO					3	3	5.5
IESG	1					1	109.8
ISR					21	21	31
ISR-AUTH					18	18	18.2
TOTAL	94	17	0	0	42	153	

7/24/11 IETF 81

SLA: EDIT + RFC-EDITOR < 6 weeks

SUBMISSION & PUBLICATION RATE

(MARCH – JUNE 2011)

Since IETF 80	Submissions 138	Publications 172~4649 pgs
IETF	124	152
Working Group	91	104
Individual - AD Sponsored	33	48
IAB	2	2
IRTF	8	9
Independent	4*	9

*Number of docs submitted and approved for publication
(i.e., does not include ISE Review, Timeout, etc.)

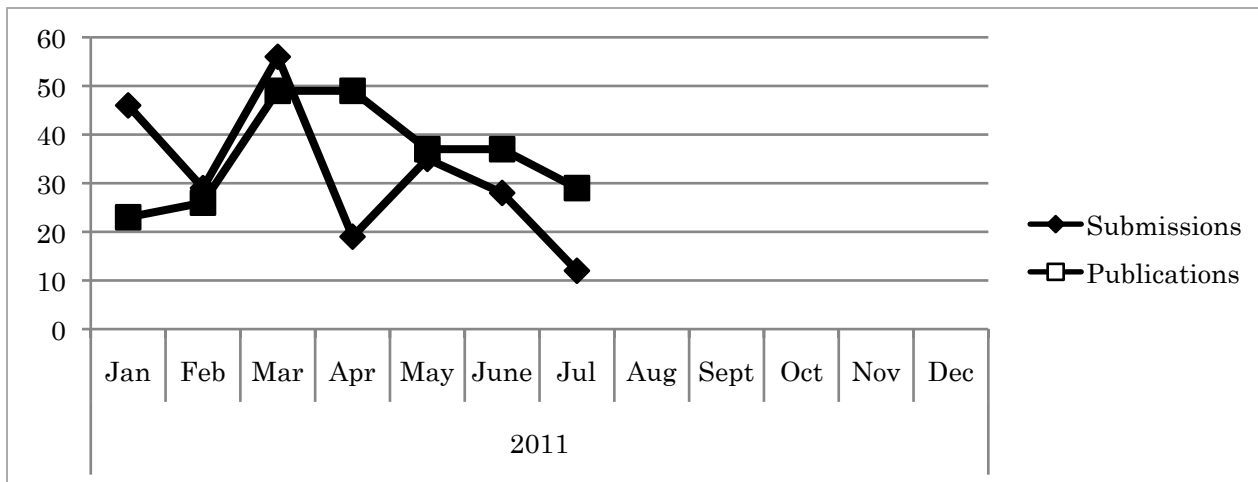
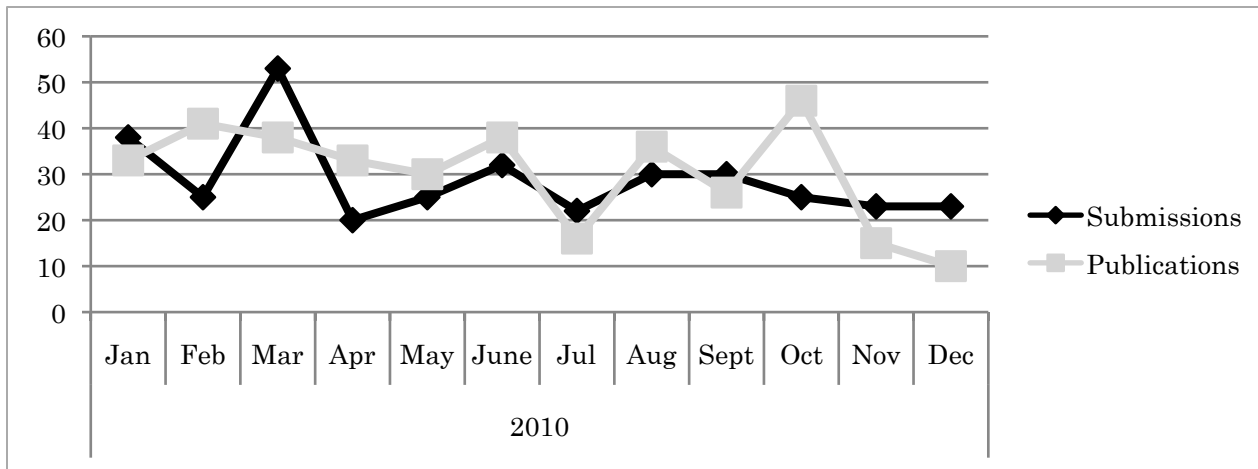
7/24/11 IETF 81

PUBLICATION RATE PER IETF

Reported @	~4-Month Period	Submitted per Month	Published per Month
IETF 73	Jul – Oct 2008	25.5	28.25
IETF 74	Nov – Feb 2009	25	14.75
IETF 75	Mar – Jun 2009	28.7	30
IETF 76	Jul – Oct 2009	28	24
IETF 77	Nov – Feb 2010	27.5	25
IETF 78	Mar – Jun 2010	32.25	35.5
IETF 79	Jul – Oct 2010	19.5	31
IETF 80	Nov – Feb 2011	28.25	16.75
IETF 81	Mar – Jun2011	34.75	43

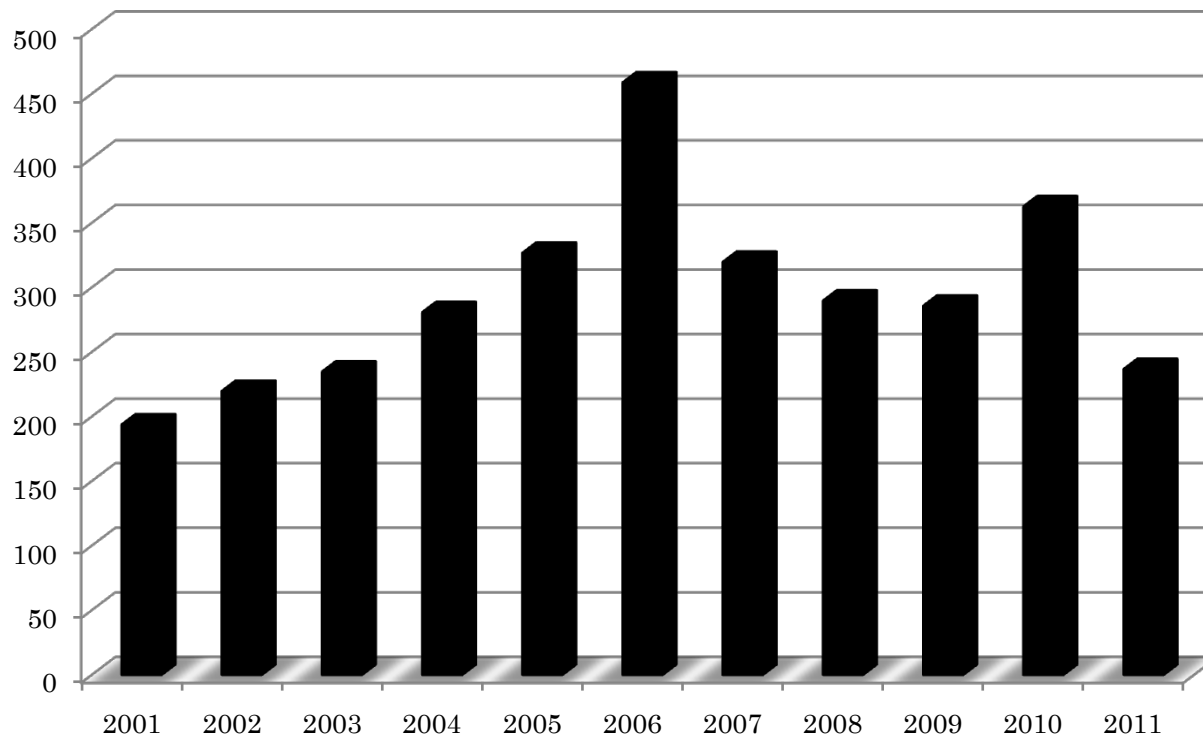
First ½ of 2011: avg subs/mon = 35
 avg pubs/mon = 37

MONTHLY SUB AND PUB RATES



ANNUAL PUBLICATION RATE

Annual Publications



2004: 281

2005: 327

2006: 459

2007: 320

2008: 290

2009: 286

2010: 363

YTD: 250

7/24/11 IETF 81

TOTAL ERRATA OVER 8 IETFs

