



RFC EDITOR REPORT

IETF 84
Vancouver, Canada

1

RFC EDITOR AT IETF 84

Office Hours

RPC Mon. – Wed. 9:00 – 4:30

RSE Mon. & Tues. 1:30 – 4:00; Wed. 9:30 – 11:30

ISE Mon. & Wed. 9:00 – 11:30

Tutorial:

Introduction to IETF Tools

Sun., July 29 (3:00 – 4:50)

Room: Regency B

RFC Format BoF

Tues., July 31 (10:30 – 11:30)

Room: Regency D

SUBMISSION & PUBLICATION RATE

(1 March – 25 July 2012)

Since IETF 83	Submissions 142*	Publications 150~3486 pgs
IETF	122	140
Working Group	96	110
Individual - AD Sponsored	26	30
IAB	2	3
IRTF	10	1
Independent	8	6

*Number of docs submitted and approved for publication
(i.e., does not include ISE Review, Timeout, etc.)

RPC QUEUE

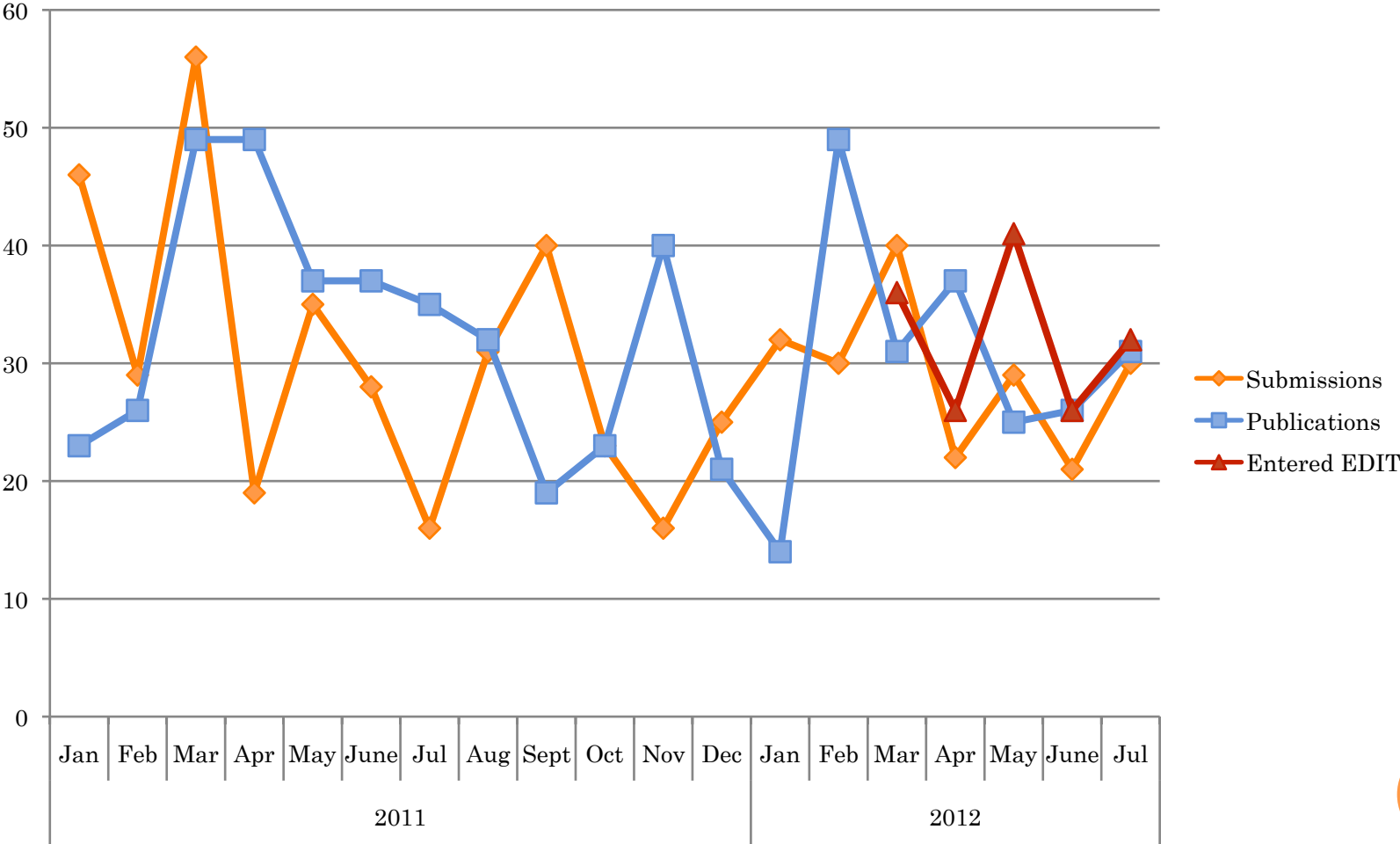
(As of 23 July 2012)

Current Q	IETF	Non-WG IETF	IAB	IRTF	Independent	Total	Med Wks in State
EDIT	13	4	1	9	1	28	1.1
RFC-EDITOR	9	3		1		13	1.4
AUTH48	13	1				14	1.1
AUTH48-DONE	1					1	.6
AUTH	1					1	1.6
IANA	1	2			1	4	4.6
MISSREF	21	3				24	
1G	15	2				17	30.1
2G	6	1				7	17.2
TO					1	1	.6
IESG	1					1	0
TOTAL	60	13	1	10	3	87	

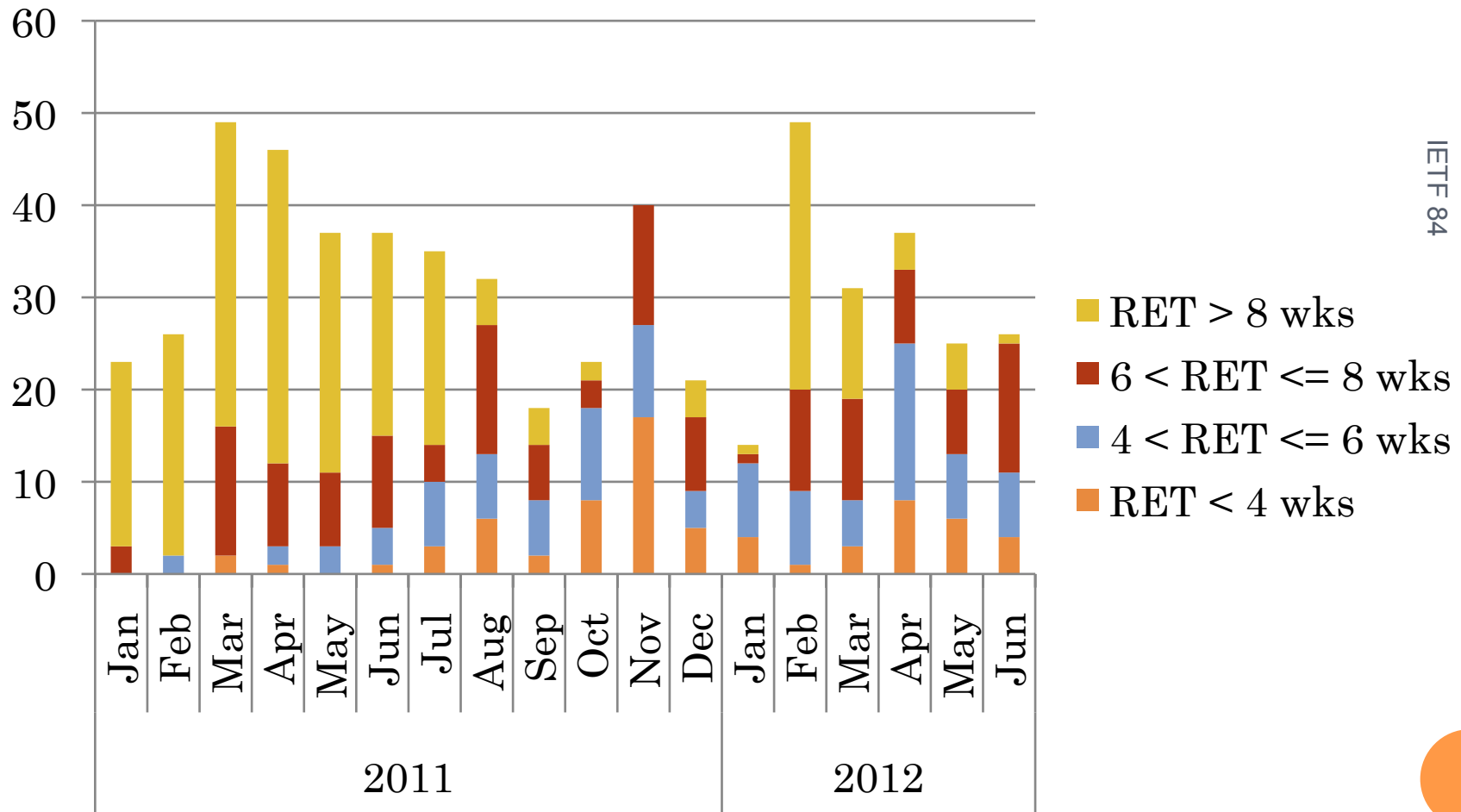
7/28/12 IETF 84

New state added:
AUTH48-DONE - final approvals are complete

MONTHLY QUEUE



RPC PROCESSING TIMES

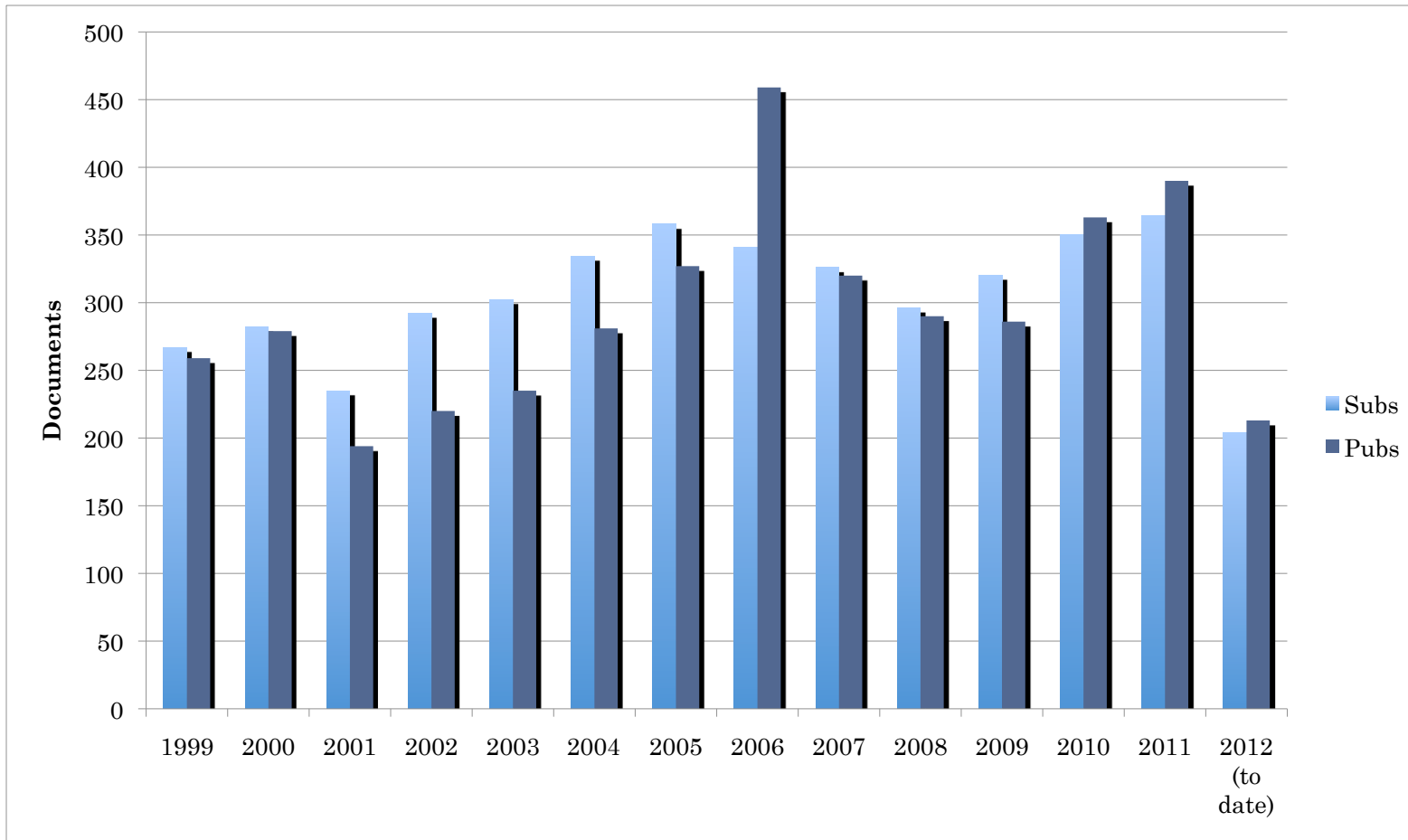


where RET = weeks in EDIT state + weeks in RFC-EDITOR state

PUBLICATION RATE PER IETF

Reported @	~4-Month Period	Submitted per Month	Published per Month
IETF 76	Jul – Oct 2009	28	24
IETF 77	Nov – Feb 2010	27.5	25
IETF 78	Mar – Jun 2010	32.25	35.5
IETF 79	Jul – Oct 2010	19.5	31
IETF 80	Nov – Feb 2011	28.25	16.75
IETF 81	Mar – Jun 2011	34.75	43
IETF 82	Jul – Oct 2011	28.5	27
IETF 83	Nov – Feb 2012	25.75	31
IETF 84	Mar – Jun 2012	28	30

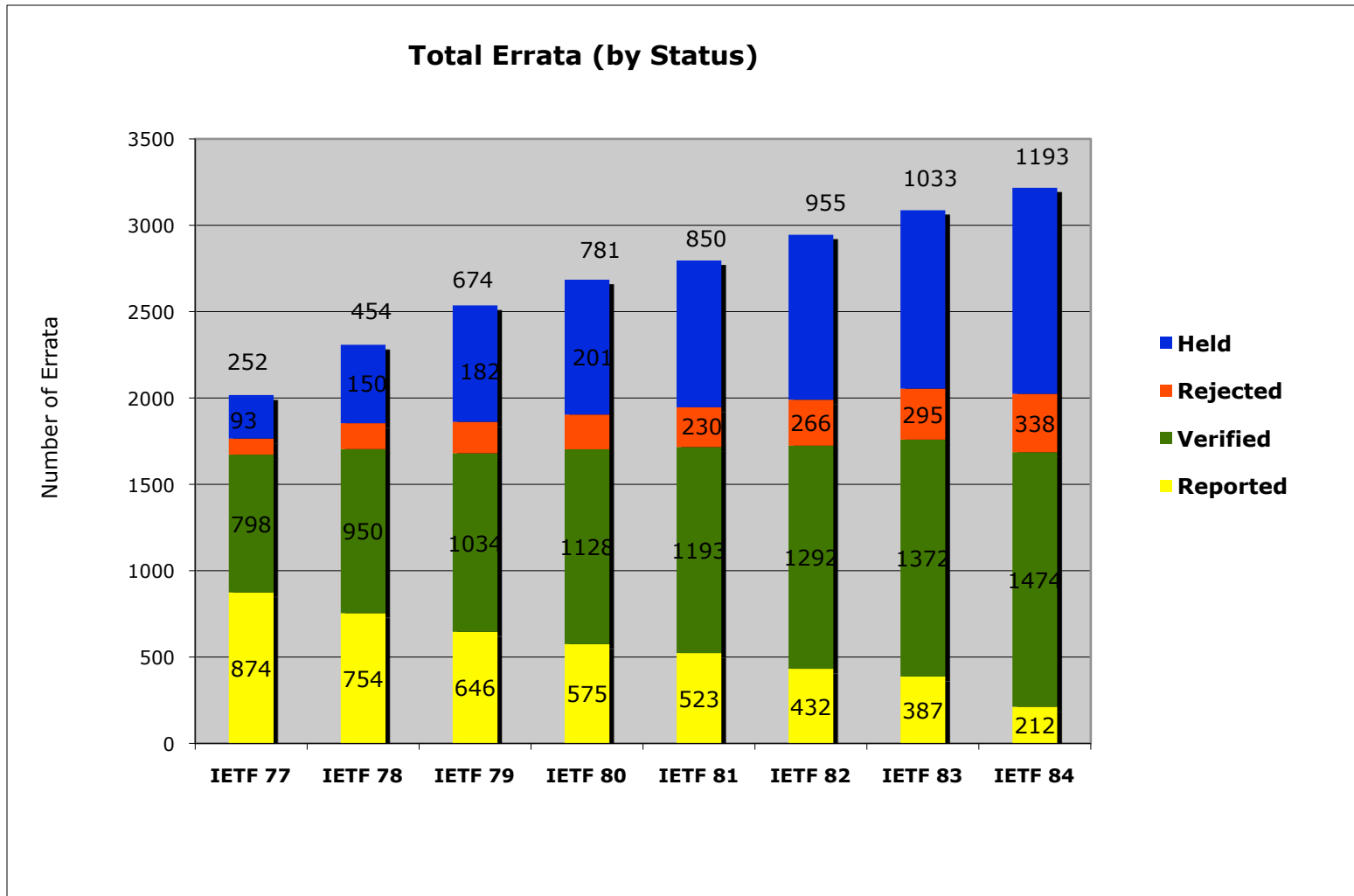
ANNUAL SUBS & PUBS



ANNUAL SUB & PUB RATES

Year	Subs	Pubs
1999	267	259
2000	282	279
2001	235	194
2002	292	220
2003	302	235
2004	334	281
2005	358	327
2006	341	459
2007	326	320
2008	296	290
2009	320	286
2010	350	363
2011	364	390
2012 (to date)	204	213

TOTAL ERRATA OVER 8 IETFs



7/27/12 IETF 84

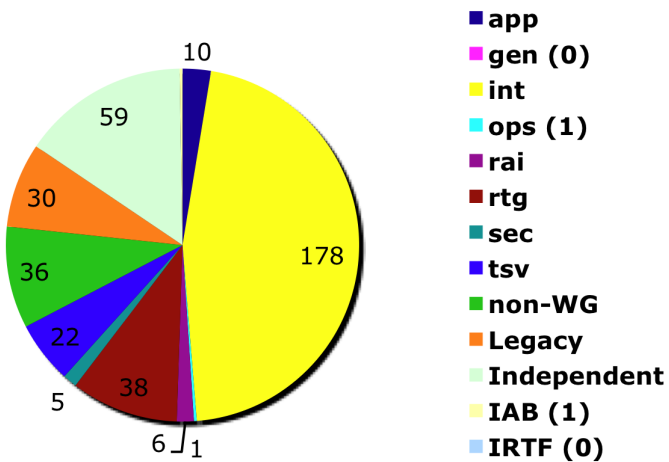
REPORTED ERRATA, BY SOURCE

IETF 83

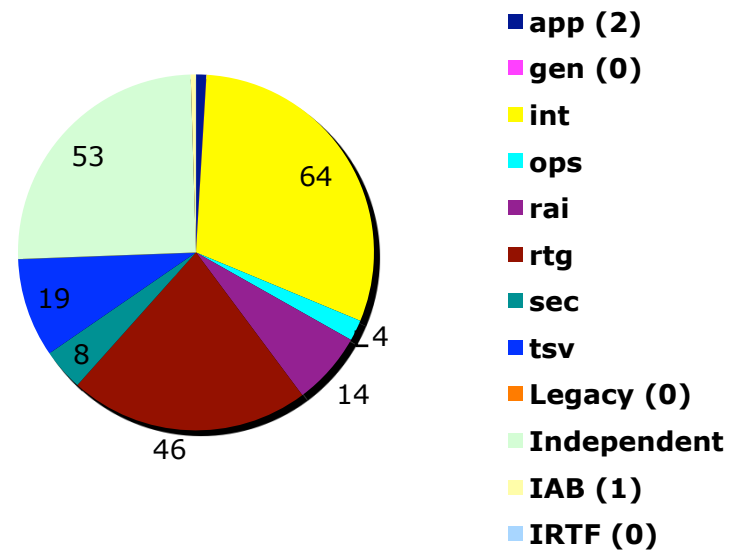
IETF 84

7/29/12

Reported Errata by Source of the RFC



Reported Errata by Source of the RFC
(with Non-WG included in Assigned Area)



ON THE HORIZON

- Preparing for integration with the datatracker per RFC 6359
“Datatracker Extensions to Include IANA and RFC Editor Processing Information”
- RFC Format Discussion
Summary of rfc-interest discussion
<http://www.rfc-editor.org/rse/wiki/doku.php?id=formatsummary>
- RFC Editor Style Guide
to be released for community review shortly after IETF 84