

RFC Editor Report

IETF 91
Honolulu, Hawaii

RFC Editor at IETF 91

- Office Hours

RPC: Mon - Thu

RSE: Tue - Wed

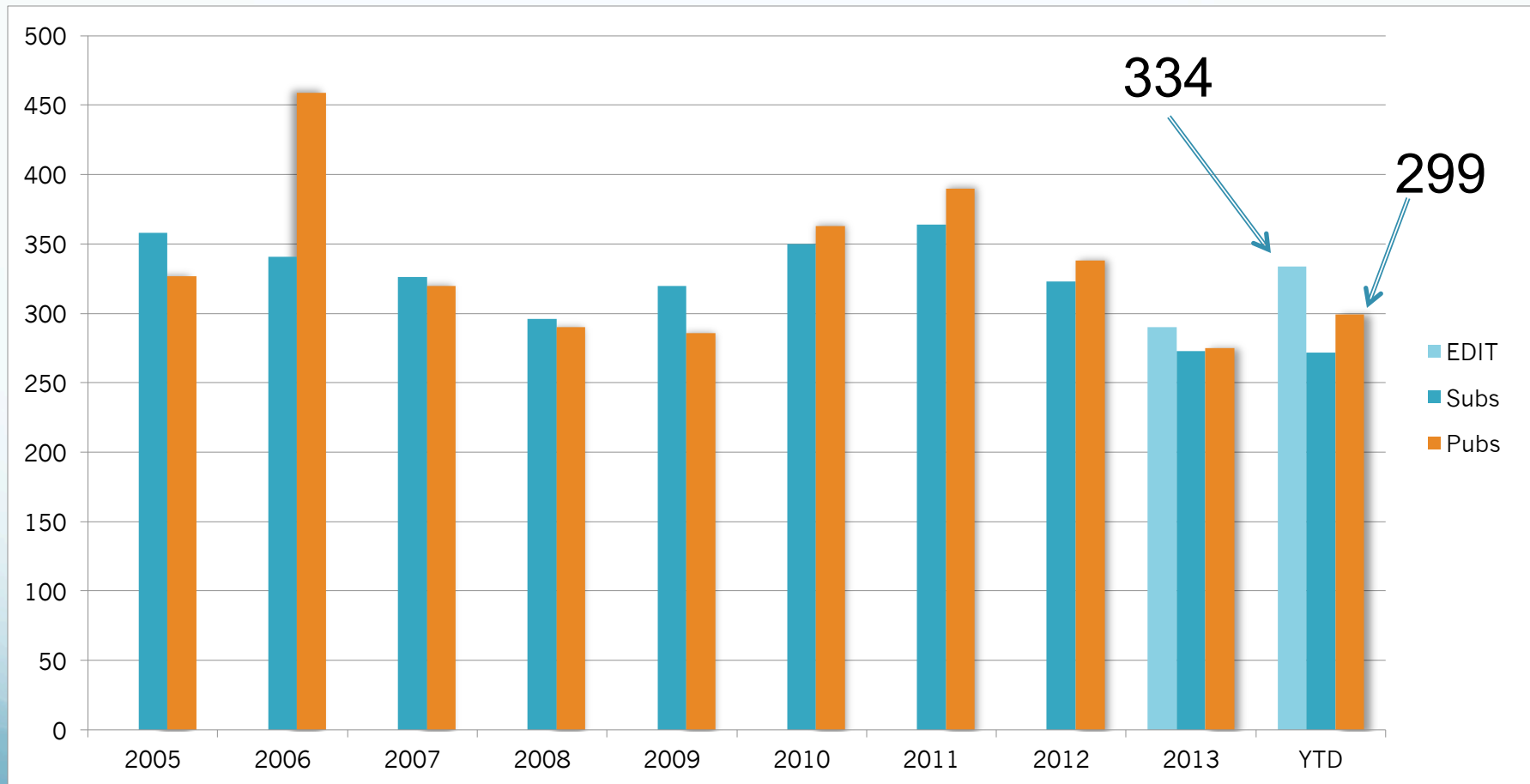
ISE: Tue & Thu

<http://www.rfc-editor.org/ietf.html>

- Experimental Writing Lab

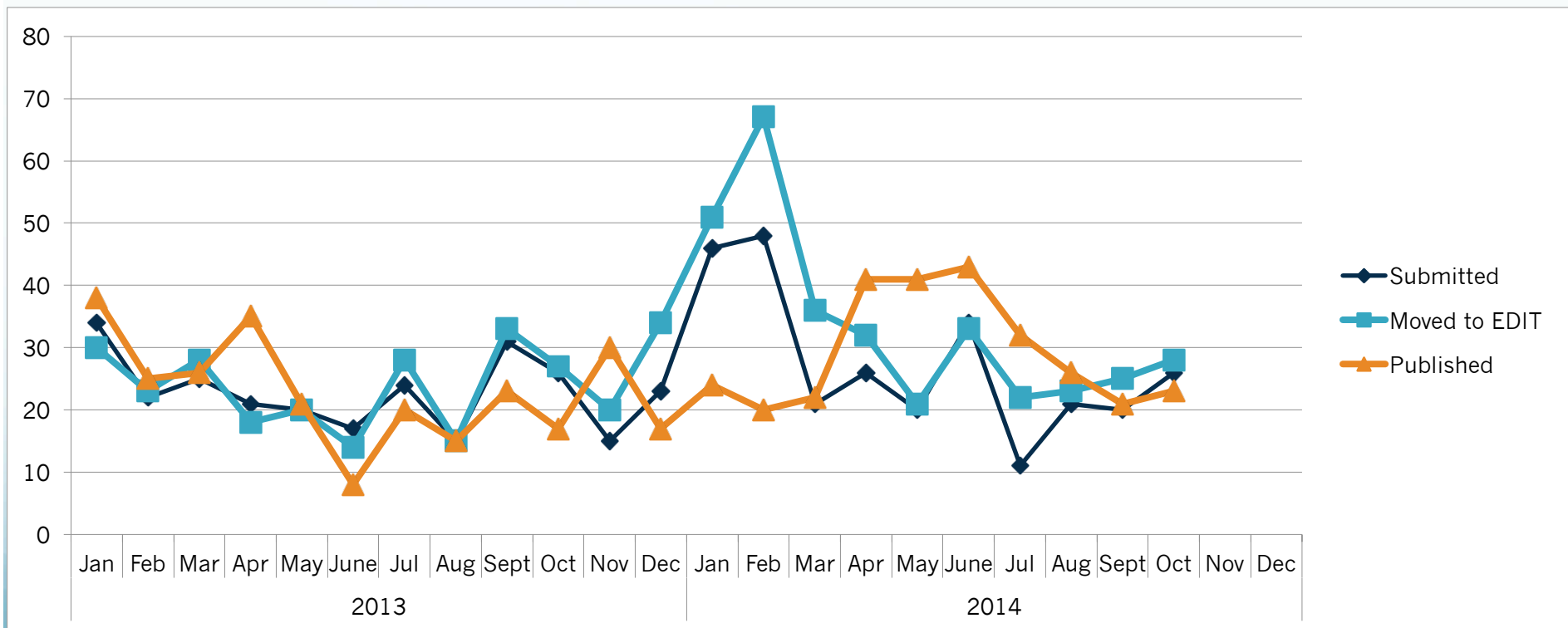
Sun - Wed

Annual Subs & Pubs



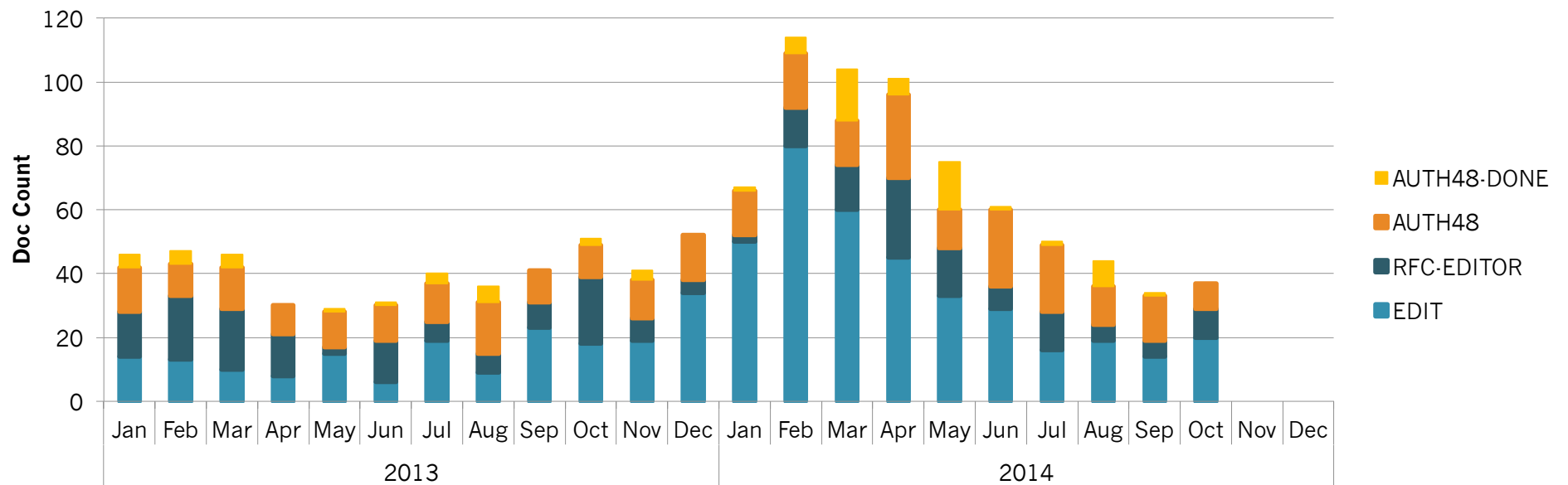
Monthly Queue

Jan – Oct 2014	Subs	Pubs
IETF	217	233
IETF non-wg	28	37
IAB	5	6
IRTF	2	4
Independent	20	19



Queue Movement

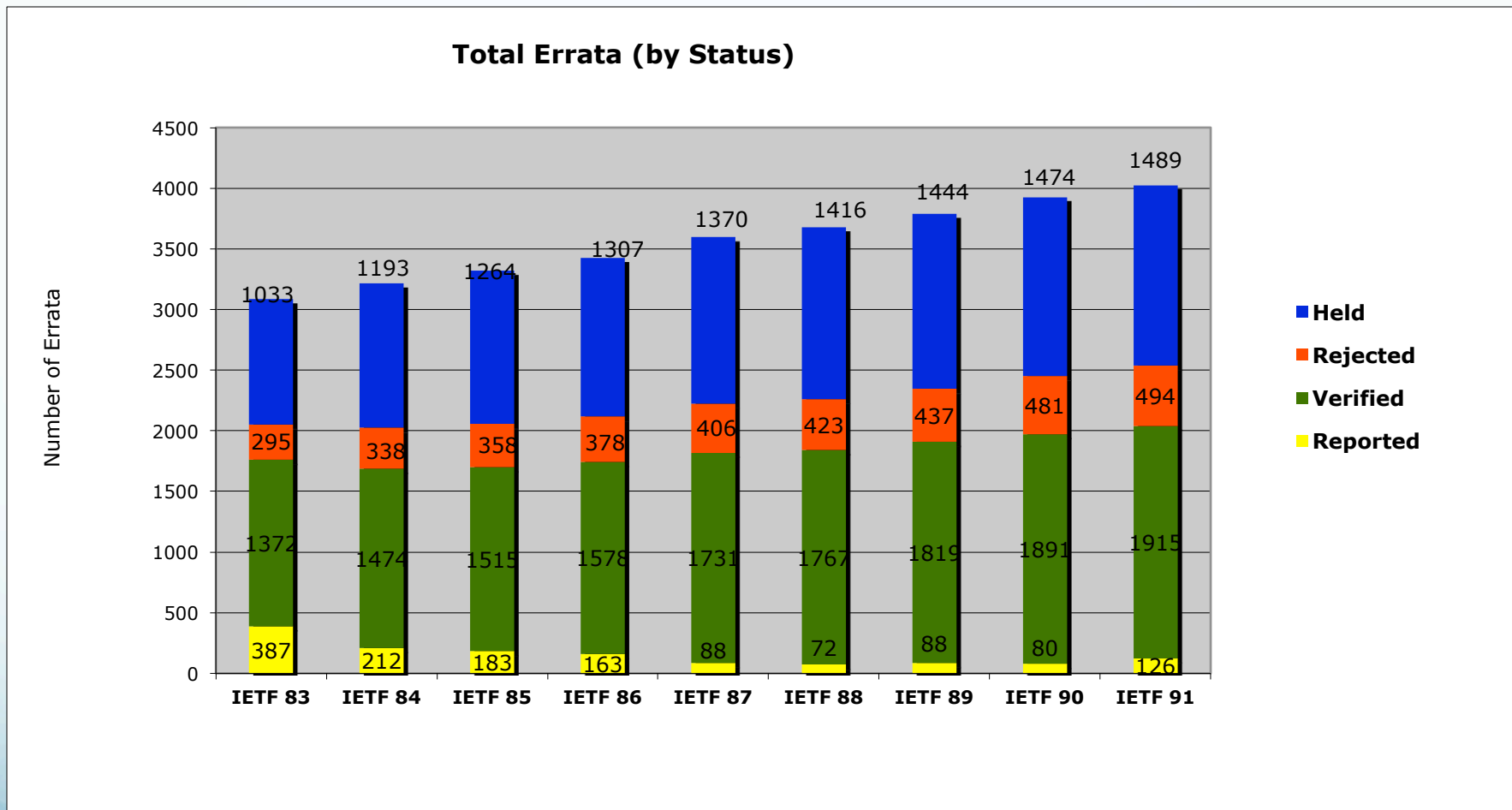
of Docs in Primary Processing States



RPC PROCESSING TIMES

	2013		2014										12mo Avg	
	Nov	Dec	Jan	Feb	Mar	Apr	May	Jun	Jul	Aug	Sep	Oct		
Met SLA Target (67% RET or better)	✓	✓	✗	✗	✗	✗	✗	✗	✗	✗	✓	✗	✓	33%
% of docs pub <= 6 wks	73%	88%	63%	60%	36%	17%	5%	2%	46%	77%	52%	74%	49%	
# of docs pub <=6 wks	22	15	15	12	8	7	2	1	13	20	13	17	12	
total # of docs pub	30	17	24	20	22	41	43	43	32	26	25	23	29	
total # of docs sub	15	23	46	48	21	26	20	34	11	21	20	26	26	
total # of docs entering EDIT	20	24	51	67	32	21	33	33	22	23	21	28	31	
67th percentile (wks)	6	5.9	6.1	6.1	7.1	9.7	10	11	8.2	5.9	7.4	5.8	7.5	

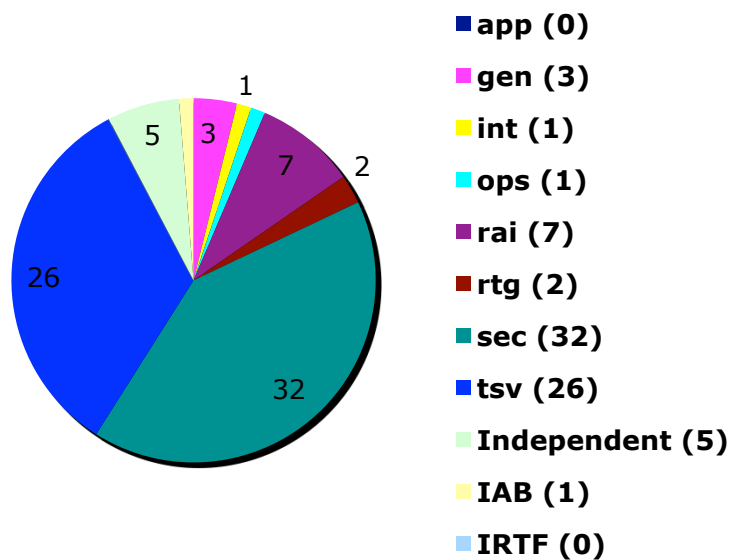
Total Errata over 8 IETFs



as of 2014-07-16

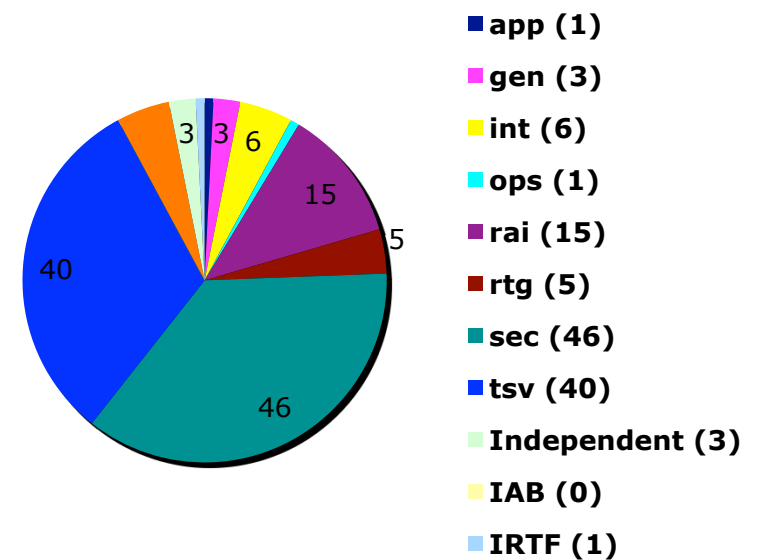
Reported Errata by Source of RFC

IETF 90



as of 2014-07-16

IETF 91



as of 2014-11-05

What's New

- Clustered AUTH48 pages
shows status of RFCs-to-be within cluster in AUTH48
- Updated info pages we can be indexed with Google Scholar
- RFC 7322 published – RFC Style Guide
- Created quick list of updates authors can implement now
<http://www.rfc-editor.org/styleguide.html>
- Responded to 3 legal requests since IETF 90
- 2 RFPs out
 - DOI work
 - RFC Editor site revamp

Experimental Writing Lab

- Offered 18 sessions
- 12 signups; some requesting review of multiple docs
- Asked authors to reply to questions to help us focus the discussion
- Created resources page for authors
http://www.rfc-editor.org/writing_resources.html
- Will report on experiment after IETF 90