



RFC EDITOR REPORT

IETF 82

Taipei, Taiwan

November 2011

1

WHO IS THE RFC EDITOR

Olaf Kolkman: Acting RSE (rse@rfc-editor.org)

Nevil Brownlee: ISE (rfc-ise@rfc-editor.org)

RFC Production Center:

- Sandy Ginoza (sginoza@amsl.com)
- Alice Hagens (ahagens@amsl.com)
- Megan Ferguson (mferguson@amsl.com)
- Lynne Bartholomew (lbartholomew@amsl.com)
- Rebecca VanRheenen (rvanrheenen@amsl.com)
- RFC Editor (rfc-editor@rfc-editor.org)

2 additional PT editors started in August

- Linda Butler (lbutler@amsl.com)
- Judy Furukawa (jfurukawa@amsl.com)

Note: You may receive email from any of these addresses.

RFC EDITOR AT IETF 82

RFC Production Center Office Hours

Monday 9:00 – 1:00

Tuesday - Wednesday 9:00 – 4:30

ISE Office Hours

Nevil Brownlee

Monday – Tuesday 1:00 – 3:00

Document Lifecycle Tutorial

Presented by: Alice Hagens and Alexey Melnikov

Sunday, November 13, 2011 / 3:00 - 4:50

Room: 102

MORE ON THE RFC INTEREST LIST

- The list for all RFC related policies
- For all matters concerning cross-stream RFC matters like tools and style
 - For instance, a recent thread on “authors, editors, and contributors”
- Not for discussion of content of individual RFCs

CURRENT RFC EDITOR QUEUE

(As of 7 November)

Current Q	IETF	Non-WG IETF	IAB	IRTF	Independent	Total	Med Wks in State
EDIT	36	4	1			41	6.4*
RFC- EDITOR	11				1	12	2.2
AUTH48	18	5			1	24	1.4
AUTH	1					1	0
IANA	4	1				5	.7
MISSREF	20	4				24	29.4
TO					2	2	5.0
IESG	2					2	64.5
ISR					24	24	35
ISR-AUTH					19	19	28.8
TOTAL	92	14	1	0	47	154	

* This number is inaccurate because it includes documents that were not able to move forward; they referenced a document in MISSREF, i.e., what we call MISSREF 2G.

SUBMISSION & PUBLICATION RATE

(JULY - OCTOBER 2011)

Since IETF 81	Submissions	Publications
	111	108~3027 pgs
IETF	106	107
Working Group	89*	84
Individual - AD Sponsored	17	28
IAB	1	0
IRTF	1	1
Independent	3	0

draft-ietf-eai-frmwk-4952bis was withdrawn

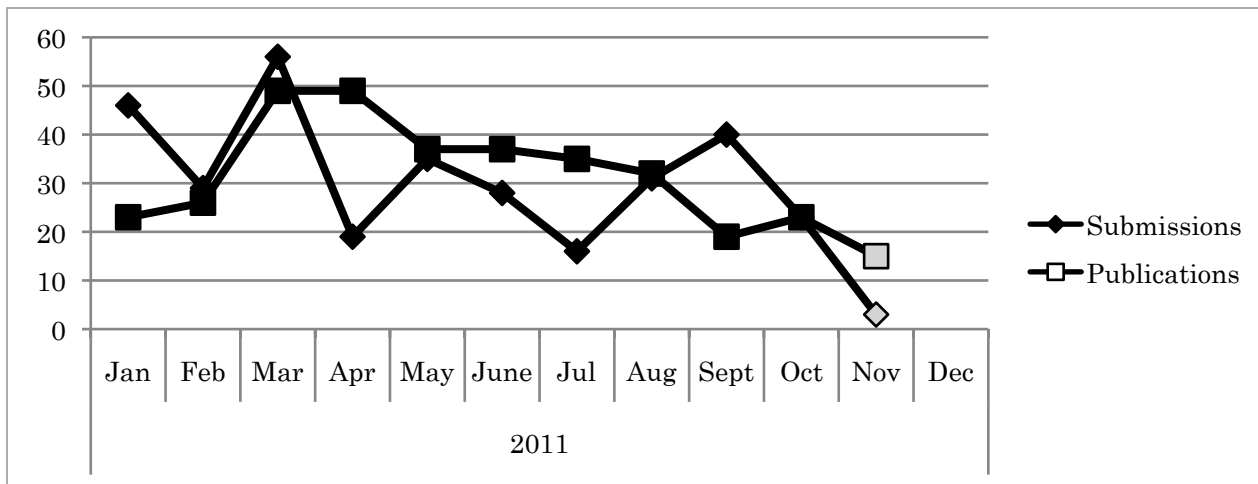
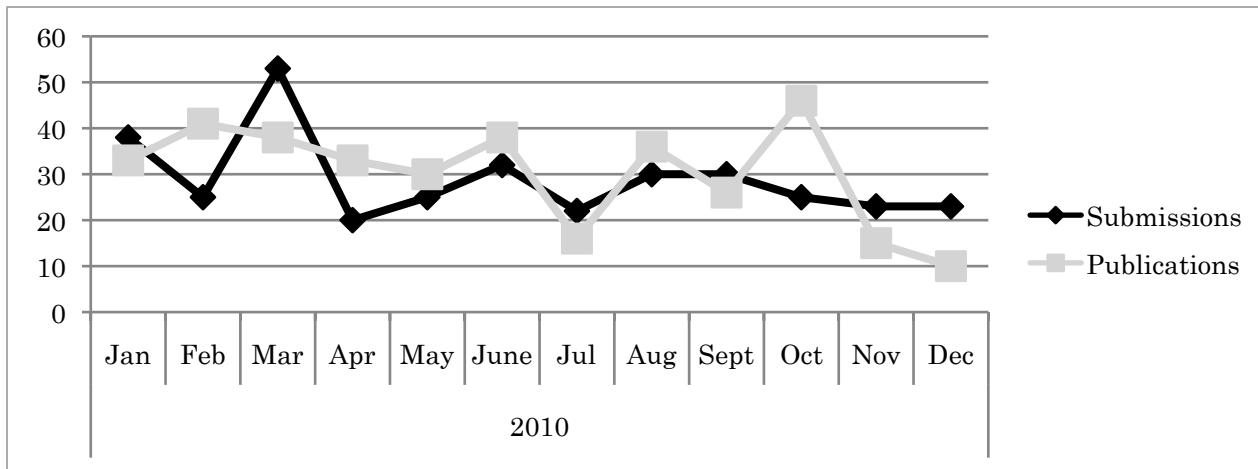
*Number of docs submitted and approved for publication
(i.e., does not include ISE Review, Timeout, etc.)

11/27/11 IETF 82

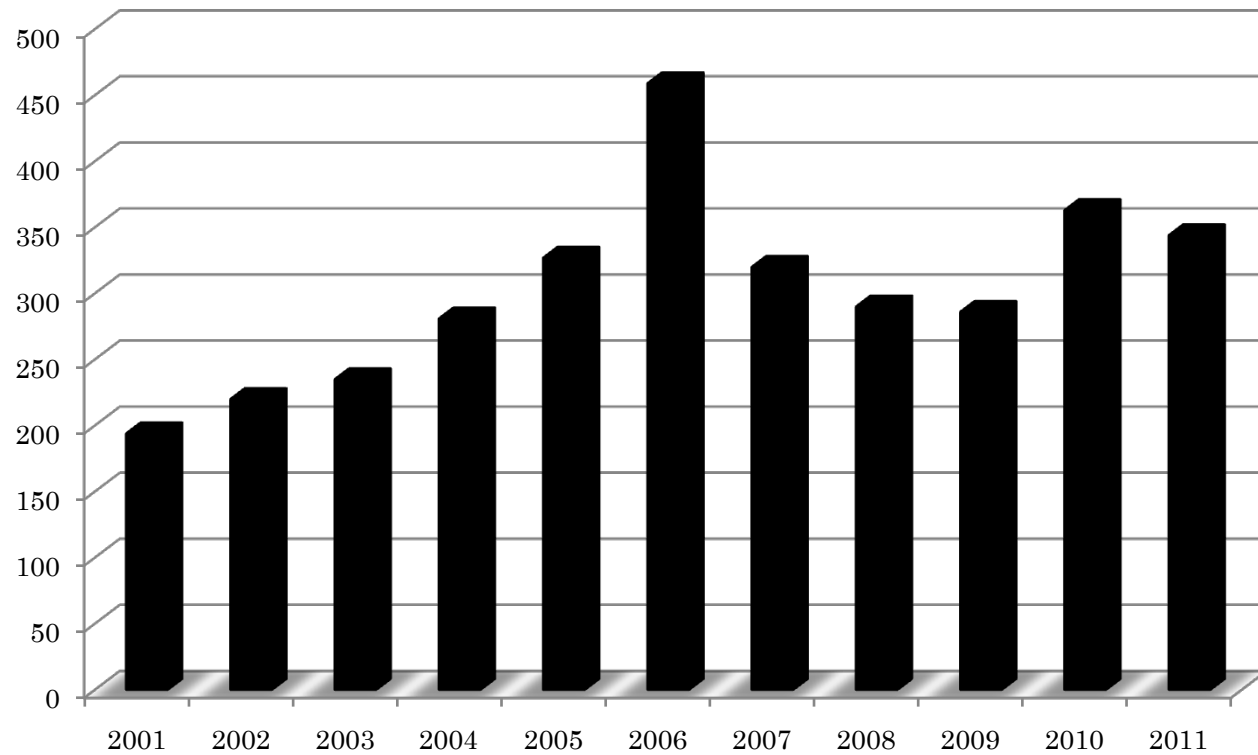
PUBLICATION RATE PER IETF

Reported @	~4-Month Period	Submitted per Month	Published per Month
IETF 74	Nov – Feb 2009	25	14.75
IETF 75	Mar – Jun 2009	28.7	30
IETF 76	Jul – Oct 2009	28	24
IETF 77	Nov – Feb 2010	27.5	25
IETF 78	Mar – Jun 2010	32.25	35.5
IETF 79	Jul – Oct 2010	19.5	31
IETF 80	Nov – Feb 2011	28.25	16.75
IETF 81	Mar – Jun 2011	34.75	43
IETF 82	Jul – Oct 2011	28.5	27

MONTHLY SUB AND PUB RATES



ANNUAL PUBLICATION RATE



2004: 281

2005: 327

2006: 459

2007: 320

2008: 290

2009: 286

2010: 363

YTD: 344

11/27/11 IETF 82

TOTAL ERRATA OVER 9 IETFs

