

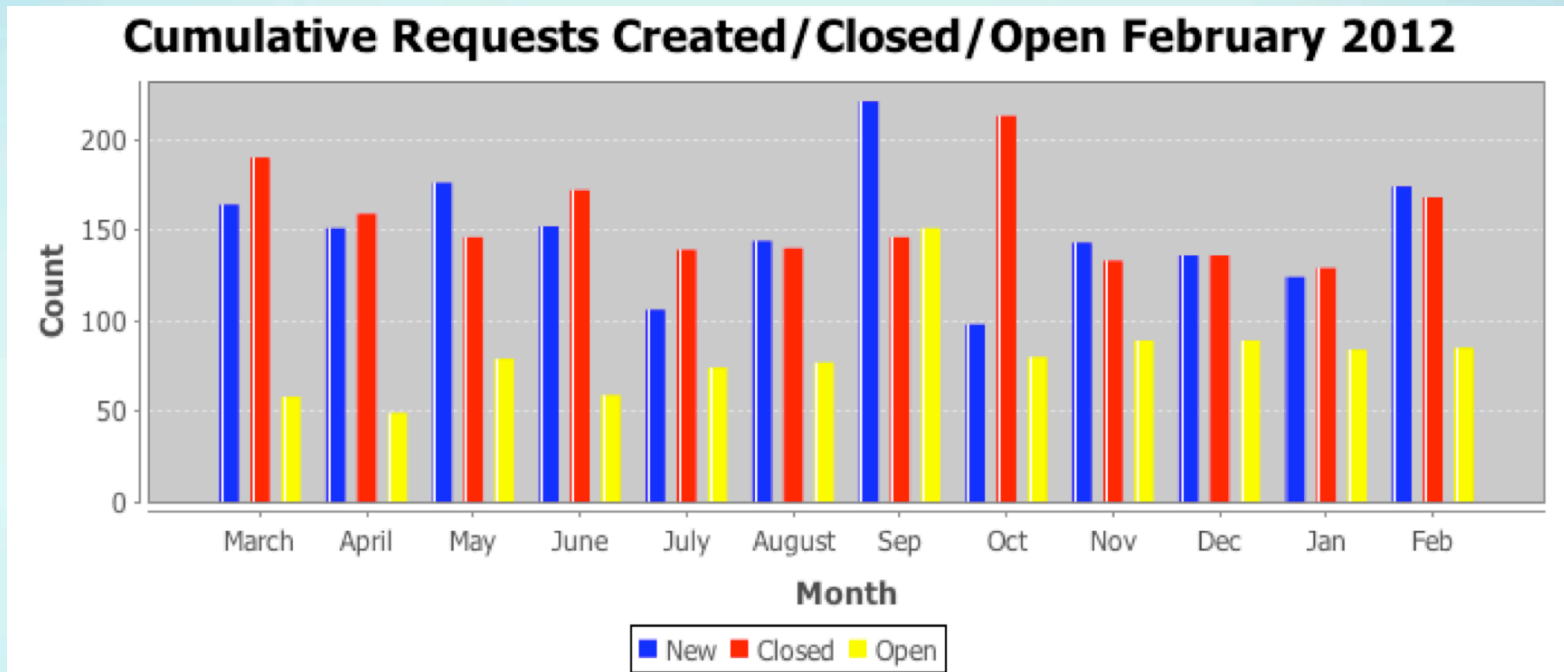
# IANA Plenary Report



Michelle Cotton  
Manager, IANA Services  
ICANN  
March 2012

IETF-83, Paris

# Processing IETF Related Requests



The number of requests processed for the IETF remains steady.  
(Does not include Private Enterprise Number (PEN) Requests)

# SLA Performance

- Average cumulative percentage for September 2011 through February 2012 was 92%

	Sep	Oct	Nov	Dec	Jan	Feb
Met SLA Target 90%	●	●	●	●	●	●
Cumulative Percentage	95%	92%	97%	93%	91%	86%

# Update on Projects and Deliverables

- First phase of integration of tools (IETF datatracker and IANA's ticket system) currently in testing
  - This will allow users to see the "IANA" state of approved documents to become RFCs
- Planning phase 2 of integration which involves "IANA" states being visible for documents that are being reviewed for IANA actions during Last Call and IESG Evaluation
- XML'ization of registries is 85% complete
- 2012 SLA between ICANN and IAOC drafted and being considered for approval

# Documentation Collaboration with the IETF

- Internet-Drafts
  - draft-iana-rfcinventory-report-00
  - draft-vegoda-cotton-rfc5735bis-00
- Drafts-to-be (In progress)
  - Character sets document
  - RFC4020 bis
  - Private Enterprise Numbers document
  - RFC5226 bis

# IANA and DNSSec

- As of 21 March, 85 TLDs have a full chain of trust from the root.

See: [http://stats.research.icann.org/dns/tld\\_report/](http://stats.research.icann.org/dns/tld_report/)

- Ceremony 8 was executed successfully on 2 February 2012.

IANA DNSSEC information <https://www.iana.org/dnssec/>

Root KSK ceremonies <http://dns.icann.org/ksk/ceremony/>

# Questions? Important Links!

If you have any questions please send an e-mail to [michelle.cotton@icann.org](mailto:michelle.cotton@icann.org)

For a list of maintained IANA registries:  
<http://www.iana.org/protocols/>

For the queue of approved documents awaiting IANA actions:  
<http://www.iana.org/about/performance/ietf-draft-status/>

For the monthly statistics reports:  
<http://www.iana.org/about/performance/ietf-statistics>